

The patented Automag unit is the latest generation of self-purging high intensity magnetic filters for high flow, high contamination industrial applications.

The Automag has two flow chambers. Fluid enters the inlet chamber where primary filtration takes place. The partly treated fluid flows into a second chamber where it is slowed down so that the final filtration treatment can take place. It then returns to the process.

Installing Automag will improve your manufacturing effectiveness and reduce operator intervention.

Using fully filtered fluid, free from micron sized particles will:

- Improve surface finish
- Extend tool/wheel life
- Improve fluid flow
- Cut costs on scrap reduction
- Reduce downtime

All applications, which use pumped cutting fluids will benefit from using this equipment.

### Typical Applications

- Grinding
- Honing
- Milling
- Fine finishing

### Cleaning

A signal from your control system activates the outlet valve (not included) so fluid is redirected to a purge tank or reclamation unit (available as an option), then the centrally positioned pneumatic cylinder withdraws the magnetic elements from the filter.

When the contamination has been purged the magnetic elements are reinserted and the outlet valve is returned to position, bringing the unit back online. The complete cleaning cycle take 10-15 seconds depending on fluid type and filter location.

### Suitable Fluids

Oil, coolant, water.

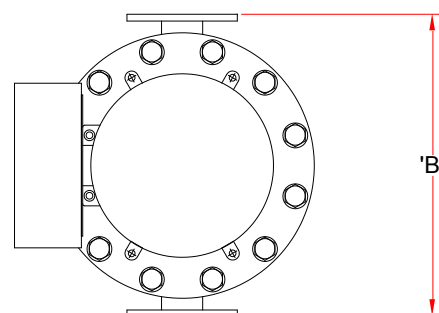
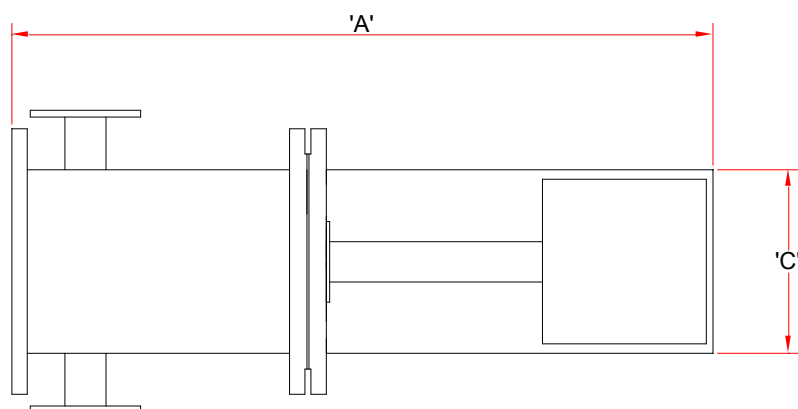
### Suitable Locations

Pre- & post-fluid holding tank, machine or process.

### Benefits

- Double magnetic length
- High collection capacity
- Removes micron sized contamination
- Self purging
- Rare earth high intensity magnetic material
- Compact
- No maintenance





## Product Information

Part Number	Port Pipe	Rod Qty	Capacity kgs	Max FlowRate ltrs/min	Weight kgs	Diameter mm		
						A	B	C
<b>AMC</b>	1½" PN16	8	2.5	200	40	740	300	200
<b>AM6</b>	2" PN16	6	7	450	186	1065	450	275
<b>AM12</b>	3" PN16	12	14	900	321	1145	620	405

## Performance

### Maximum Pressure

10 Bar

### Magnetic Performance

AM6 & AM12 9000 Gauss, AMC 6000 Gauss

### Performance Reading

On tube surface

### Magnetic Material

rare earth neodymium iron boron

### Magnet Grade

N45 – Inspected & confirmed via hystergaph prior to use

### Temperature

5°–70°C

## Materials

### Filter Body

304 Grade stainless steel, powder coated white

### Filter Cover

304 Grade stainless steel, powder coated silver

### Control Box

Aluminium, powder coated white

### Pneumatic Cylinder

Festo

### Solenoid Valve

ASCO

### Limit Switch

Proximity Sensors, RS origin

### Sealing:

Nitrile O-Ring, Gasket Seal - Novus 30

## Options

Simple timer control box

Purge valve arrangement

Super high flow rate systems

Pre-programmed PLC controls

Complete mounting skid arrangement

Purge fluid collection tank and reclaim system