



## INT 30E (not conform ce norms)

Horizontal end milling machine with manual feed designed to perform milling at 90 ° on aluminum profiles for windows and doors. The forward motion of guides and recirculating ball bearings which guarantees rigidity, smoothness and precision. The motor with thermal protection, the horizontal clamp and pneumatic vertical. Perfect protection work area, with ample internal visibility put the car at the highest levels of security for the operator. The quick change of the cutter unit, the depth stop turret with 6 adjustable positions and pneumatic tool lubrication mist (emulsified oil) will speed up the work cycle.

The work plan of ground steel with electrolytic treatment is smooth, non-stick with chips and rust. The integrated warehouse door utensils and the evacuation of shavings conveyed side make the ordered machine and clean.

## Technical datas

Power supplies treephasee	380/400-50/60	Volt-Hz
Treephasee motor power	1.1	kW
Spindle speed	2850	r.p.m.
Stroke axis X	320	mm
Clamp capacity (bxh)	200x120	mm
Maximum cutter diameter	160	mm
Milling angle	90	°
Weight	100	kg

## Standard equipement

Service spanners  
Use and maintenance manual  
Cutter sleeve cutters Ø27/32 L=160 mm (installed)  
Quick tool change lever  
Locking pin on cutter sleeve

## Options

Roller conveyor for supporting profiles L=150 mm  
Groups cutters a design



## INT 30 - INT 30F

Horizontal end milling machine with manual feed designed to perform milling at 90 ° for version "30" also variable angle from -45 ° to + 45 ° in the version "30F" of aluminum profiles for windows and doors. The advancing movement on guides and recirculating balls which guarantees rigidity, smoothness and precision in time. The brake motor with thermal magnetic protection, the grip horizontal and vertical clamps with low pressure device and the area guard work, to raise visibility inside the car at the highest levels of safety for the operator. Change Quick cutter, the depth stop turret with 6 adjustable positions and pneumatic tool lubrication mist (emulsified oil) will speed up the work cycle. The work plan of ground steel with electrolytic treatment is smooth, non-stick the chips and rust. The warehouse integrated tool holders and swarf conveyed make the car neat and clean.

# INT 30 - INT 30F

Rinaldi



## Technical datas

Power supplies treephasee	380/400-50/60	Volt-Hz
Treephasee motor power	1.1	kW
Spindle speed	2850	r.p.m.
Stroke axis X	320	mm
Clamp capacity (bxh)	200x120	mm
Maximum cutter diameter	160	mm
Milling angle (model 30)	90	°
Milling angle (model 30F)	-45...+45	°
Weight	110	kg

## Standard équipement

Service spanners  
Use and maintenance manual and ce marking  
Cutter sleeve cutters Ø27/32 L=160 mm (installed)  
Locking pin on cutter sleeve  
Quick tool change lever  
Adjustable leveling feets (installed)  
Air blow gun for cleaning (installed)

## Options

Roller conveyor for supporting profiles L=150 mm  
Groups cutters a design



**Montfort International Ltée**

2500 avenue Watt, Québec (QUÉBEC) Canada G1P 3T3  
Tel : 418-877-0778 | 1-800-463-6668 - Fax: 418-877-0548  
info@montfort-international.com | www.montfort-international.com





## INT 30M

Horizontal end milling machine with manual feed designed to be milled out of the head at 90 ° and with variable angle from -45 ° to + 45 ° on aluminum profiles for windows and doors. The forward motion of guides and recirculating ball bearings which guarantees rigidity, smoothness and precision. The brake motor, the horizontal clamp and pneumatic vertical device with low pressure and integral protection work area, with ample internal visibility put the car at the highest levels of security for the operator.

The quick change of the pneumatic control group of cutters, the abutment revolver depth with 6 adjustable positions and pneumatic micro-fog tool lubrication (emulsified oil) speed up the work cycle. The work plan of ground steel with nickel coating is smooth non-stick to the chips, scratch for the profile and rust over time. The integrated warehouse door utensils and the evacuation of shavings conveyed side make the ordered machine and clean.

## Technical datas

Power supplies treephase	380/400 - 50/60	Volt-Hz
Treephase motor power	1.1	kW
Spindle speed	2850	r.p.m.
Stroke axis X	300	mm
Clamp capacity (bxh)	200 x 120	mm
Maximum cutter diameter	160	mm
Milling angle	-45...+45	°
Weight	125	kg

## Standard equipement

Service spanners  
Use and maintenance manual and ce marking  
Cutter sleeve Ø27 / 32 L=135 mm (installed)  
Locking pin on cutter sleeve  
Adjustable leveling feets (installed)  
Air gun for cleaning (mounted)

## Options

Roller conveyor for supporting profiles L=150 mm  
Groups cutters a design



## INT 32 - INT 32A

Horizontal end milling machine with manual feed in the version "32" in the semi-automatic or "32A" version are progettatate to perform milling head at 90 ° and with variable angle from -45 ° to + 45 ° on aluminum profiles for windows and doors. A mechanical transmission increases the speed of tool rotation improving the quality of workmanship especially on the painted profile and milling variable angle significantly reducing the average noise level. The forward motion of guides and recirculating ball bearings guarantees rigidity, smoothness and precision. The brake motor, the horizontal clamp and pneumatic vertical device with low pressure and integral protection work area, with ample internal visibility put the car at the highest levels of security for the operator.

The quick change of the group pneumatic drills, the joke revolver depth with 6 adjustable positions, the pneumatic tool-mist lubrication (oil emulsified), the roller of support rail and not run of workpiece clamping system approach speed up the work cycle. The feed speed adjustment is Oleopneumatic in the "32A" version. The work plan of ground steel with nickel coating is smooth non-stick to the chips, scratch for the profile and rust over time. The integrated warehouse door tools, evacuation conveyed chips, the chips drawer and fume extraction nozzle make the ordered car and clean.

# INT 32 - INT 32A

Rinaldi



## Technical datas

Power supplies treephase	380/400-50/60	Volt-Hz
Treephase motor power	1.5	kW
Spindle speed	6000	r.p.m.
Stroke axis X	320	mm
Clamping capacity (bxh)	200x120	mm
Maximum cutter diameter	180	mm
Milling angle	-45...+45	°
Weight (model 32-32A)	180-190	kg

## Standard equipement

Service spanners  
Use and maintenance manual and ce marking  
Cutter sleeve Ø27 / 32 L=160 mm (installed)  
Locking pin on cutter sleeve  
Extractor fan connection Ø70 mm  
Adjustable leveling feets (installed)  
Air gun for cleaning (installed)

## Options

Cutter heads  
Swarf exhauster model ASP 15



**Montfort International Ltée**

2500 avenue Watt, Québec (QUÉBEC) Canada G1P 3T3  
Tel : 418-877-0778 | 1-800-463-6668 - Fax: 418-877-0548  
info@montfort-international.com | www.montfort-international.com





## INT 32S - INT 32AS

Horizontal end milling machine with manual feed in the version "32S" in the semi-automatic or "32AS" version are progettatate to perform milling head at 90 ° and with variable angle from -45 ° to + 45 ° on aluminum profiles for windows and doors. A mechanical transmission increases the speed of tool rotation improving the quality of workmanship especially on the painted profile and milling variable angle significantly reducing the average noise level. The forward motion of guides and recirculating ball bearings guarantees rigidity, smoothness and precision. The brake motor, the horizontal clamp and pneumatic vertical device with low pressure and integral protection work area, with ample internal visibility put the car at the highest levels of security for the operator. The quick change of the group pneumatic drills, the joke revolver depth with 6 adjustable positions, the pneumatic tool-mist lubrication (oil emulsified), the roller of support rail and not run of workpiece clamping system approach speed up the work cycle. The feed speed adjustment is Oleopneumatic in "32AS" version. The work plan of ground steel with nickel coating is smooth non-stick to the chips, scratch for the profile and rust over time. The integrated warehouse door tools, evacuation conveyed chips, the chips drawer and fume extraction nozzle make the ordered car and clean. Soundproof tunnel, manually operated, (only milling at 90 °) reduces the noise emitted at about 85dB.



# INT 32S - INT 32AS

Rinaldi



## Technical datas

Power supplies treephase	380/400 - 50/60	Volt-Hz
Power treephase motor	1.5	kW
Spindle speed	6000	r.p.m.
Stroke axis X	320	mm
Clamping capacity (bxh)	200 x 120	mm
Maximum blade diameter	180	mm
Milling angle	-45...+45	°
Weight (model 32S-32AS)	220-230	kg

## Standard équipement

Service spanners  
Use and maintenance manual and ce marking  
Cutter sleeve Ø27/32 L=160 mm (installed)  
Locking pin on cutter sleeve  
Extractor fan connection Ø70 mm  
Sound proof tunnel L=1100  
Adjustable leveling feets (installed)  
Air gun for cleaning (installed)

## Options

Cutters heads  
Swarf exhauster model ASP 15



**Montfort International Ltée**

2500 avenue Watt, Québec (QUÉBEC) Canada G1P 3T3  
Tel : 418-877-0778 | 1-800-463-6668 - Fax: 418-877-0548  
info@montfort-international.com | www.montfort-international.com



## INT 35 - INT 35S

Horizontal-cut to automatic working cycle are progettate to be milled out at 90 ° head and variable angle from -45 ° to + 45 ° on aluminum profiles for windows and doors. The variable speed of rotation with electronic inverter coupled to the speed display the best picture quality display processing mainly on painted profiles and milling variable angle significantly reducing the average noise level. The forward motion of guides and recirculating ball bearings guarantees rigidity, smoothness and precision. The engine braked in counter, the horizontal clamp and pneumatic vertical device with low pressure and integral protection work area, command wide tire internal visibility put the car at the highest levels of security for the operator. The quick change of pneumatic drills Group, the joke revolver depth with 6 adjustable positions with self-tilting device cancels contact between the stop and the workpiece during the advance, the pneumatic tool lubrication pulse (neat oil), the roller conveyor of support rail and the locking piece without approach stroke speed up the work cycle system. The feed speed adjustment is hydropneumatic. The work plan of ground steel with nickel coating is smooth non-stick to the chips, scratch for the profile and rust over time. The integrated warehouse door tools, evacuation conveyed chips, the chips drawer and fume extraction nozzle make the ordered car and clean. The "35S" version includes a tunnel, pneumatically controlled, soundproofed L = 1100 mm with foot and door milling units (only milling at 90 °) to reduce noise levels emitted at about 75 dB placing it at the top of its class in terms of emitted noise and production efficiency

# INT 35 - INT 35S

Rinaldi



## Technical datas

Power supplies treephase	380/400-50/60	Volt-Hz
Power treephase motor	2.2	kW
Spindle speed	4000...7000	r.p.m.
Stroke axis X	350	mm
Clamping capacity (bxh)	240x120	mm
Maximum cutter diameter	200	mm
Milling angle	-45...+45	°
Weight (model 35-35S)	260-300	kg

## Standard équipement

Service spanners  
Use and maintenance manual and ce marking  
Cutter sleeve Ø27/32 L=160 mm (installed)  
Locking pin on cutter sleeve  
Extractor fan connection Ø70 mm  
Adjustable leveling feets (installed)  
Air gun for cleaning (installed)

## Options

Cutters heads  
Swarf exhauster model ASP 15



**Montfort International Ltée**

2500 avenue Watt, Québec (QUÉBEC) Canada G1P 3T3  
Tel : 418-877-0778 | 1-800-463-6668 - Fax: 418-877-0548  
info@montfort-international.com | www.montfort-international.com



## BABY

Intestatrice orizzontale ad avanzamento manuale da banco, studiata per eseguire la lavorazione dei fermavetri arrotondati a scatto. Esegue la fresatura necessaria al montaggio sull'anta dei fermavetri tagliati a 45° oppure a 90° in funzione della serie in modo rapido e preciso. Il movimento di avanzamento su barre e bussole a ricircolo di sfere garantisce sensibilità e precisione nel tempo.

Morsa verticale con sbloccaggio pneumatico e battute di profondità regolabili. Protezione integrale zona lavoro ad ampia visibilità interna pongono la macchina ai massimi livelli di sicurezza per l'operatore .

## Technical datas

Power supplies treephase	380/400-50/60	Volt-Hz
Power motor treephase	0.5	kW
Spindle speed	2850	r.p.m.
Stroke axis X	140	mm
Maximum cutter diameter	100	mm
Weight	25	kg

## Standard équipement

Service spanners  
Use and maintenance manual and ce marking  
Oil spraytool lubrication 0,4 litre (neat oil)  
Milling cutters (installed)  
Counterprofile (installed)  
Air gun cleaning (installed)

## Options

Spray-mist lubrication system (oil emulsion)  
Milling cutters for different series/drawing  
Counterprofile for different series/drawing





## PAN 22

Single-head pantograph manually operated bench, translational movement head with two levers designed to perform milling, following the figures reproduced on the mask, on aluminum profiles for windows and doors. The rotation of the clamp base allows you to quickly turn the piece of 90th and all intermediate angles without unlocking the grip; This device speeds up and makes more precise machining operations to be carried out on 2 faces of the workpiece. Manual vise, longitudinal and transverse stops for out mask processing, 2 probe tips and 2 batting depth adjustable placings make fast and accurate.

## Technical datas

Power supplies singlephase	220/240-50/60	Volt-Hz
Power motor	0.85	kW
Spindle speed	29000	r.p.m.
X-Y- Z axis stroke	220-100-100	mm
Clamping capacity (bxh)	110x110	mm
Maximum cutter diameter	5	mm
Diameter probe tips	5	mm
Weight	32	kg

## Standard equipement

Service spanners  
Use and maintenance manual and ce marking  
HSS MILLING CUTTER Ø5 L=68 mm  
Collet Ø8 mm  
Nut  
Standard template (installed)  
Adjustable supports (installed)

## Options

Mask without figures  
Battuta excludable  
Support rod jokes L=1000 mm  
Mask with figures in design



## PAN 26

Pantograph-head with manually operated translation movement head with indirect lever designed to perform milling, following the figures reproduced on the mask, on aluminum profiles for windows and doors. The movement axes of ball screw rods and bushings ensures sensitivity and precision. The motor with thermal protection and horizontal pneumatic clamps with low pressure device put the car at the highest levels of security for the operator. Longitudinal and transverse stops referring to metric rods out mask processing, probe tip in the tool axis with 3 diameters and adjustable depth stop making fast and precise placements. The ability to run through machining operations without turning the workpiece and the pneumatic micro-fog tool lubrication (emulsified oil) speed up the work cycle.

## Technical datas

Power supplies treephase	380/400-50/60	Volt-Hz
Power motor treephase	0.75	kW
Spindle speed	12000	r.p.m.
X-Y-Z axis stroke	260-120-130	mm
Clamping capacity (bxh)	150x200	mm
Maximum cutter sleeve	10	mm
Diameter probe tips	6-8-10	mm
Weight	110	kg

## Standard equipement

Service spanners  
Use and maintenance manual and ce marking  
HSS MILLING CUTTER Ø6 L=68 mm  
HSS MILLING CUTTER Ø8 L=80 mm  
ER collet16 Ø8...7 mm  
Hexagonal ring nut ER16  
Supporting rods for depth stops L=1000 mm  
2 Excludable stops  
Standard template (installed)  
Adjustable leveling feets (installed)  
Air gun for cleaning (installed)

## Options

Rolling conveyer for supporting profilesL=600 mm  
Rolling conveyer for supporting profiles L=1200 mm  
Copy template without shapes  
Excludable stops  
Supporting rods for depth stops L=1000 mm  
Copy template with shapes on drawing





## PAN 30E (not conform ce norms)

Pantograph-head with manually operated translation movement head with indirect lever designed to perform milling, following the figures reproduced on the mask, on aluminum profiles for windows and doors. The movement axes of ball screw rods and bushings ensures sensitivity and precision. The motor with thermal protection and pneumatic clamps horizontal pose the machine at the highest levels of security and convenience '. longitudinal and transverse stops referring to metric rods out mask processing, probe tip aligned with the tool to 2 diameters and adjustable depth stop making fast and precise placements. The ability to run through machining operations without turning the workpiece and the pneumatic micro-fog tool lubrication (emulsified oil) speed up the work cycle.



# PAN 30E

Rinaldi



## Technical datas

Power supplies treephase	380/400-50/60	Volt-Hz
Power motor treephase	0.55	kW
Spindle speed	12000	r.p.m.
X-Y -Z axis stroke	310-120-170	mm
Clamping capacity (bxh)	170x200	mm
Maximum cutter diameter	8	mm
Diameter probe tips	5-8	mm
Weight	100	kg

## Standard equipment

Service spanners  
Use and maintenance manual  
HSS milling cutter Ø5 L=68 mm  
ER16 collet Ø8...7 mm  
Hexagonal nut ER16  
Jokes support rod L=1000 mm  
Joke excludable  
Mask with standard figure (mounted)

## Options

Rolling conveyor for supporting profiles L=600 mm  
Rolling conveyor for supporting profiles L=1200 mm  
Copy template without shapes  
Excludable stops  
Supporting rods for depth stops L=1000 mm  
Copy template with shapes on drawing



**Montfort International Ltée**

2500 avenue Watt, Québec (QUÉBEC) Canada G1P 3T3  
Tel : 418-877-0778 | 1-800-463-6668 - Fax: 418-877-0548  
info@montfort-international.com | www.montfort-international.com



## PAN 31

Pantograph-head with manually operated translation movement head with indirect lever designed to perform milling, following the figures reproduced on the mask, on aluminum profiles for windows and doors. Large working capacity especially in height. The movement axes of ball screw rods and bushings ensures sensitivity and precision. The horizontal pneumatic clamps with low pressure device put the car at the highest levels of security for the operator. longitudinal and transverse stops referring to metric rods out mask processing, probe tip in the tool axis with 3 diameters and depth stop with 6 adjustable positions make fast and precise placements. The ability to run through machining operations without turning the workpiece and the pneumatic micro-fog tool lubrication (emulsified oil) speed up the work cycle.

## Technical datas

Power supplies treephase	380/400-50/60	Volt-Hz
Power motor treephase	0.75	kW
Spindle speed	12000	r.p.m.
X-Y-Z axis stroke	310-120-175	mm
Clamping capacity (bxh)	175x230	mm
Maximum cutter diameter	10	mm
Diameter probe tips	5-8-10	mm
Weight	125	kg

## Standard equipement

Service spanners  
 Use and maintenance manual and ce marking  
 HSS milling cutter Ø6 L=68 mm  
 HSS milling cutter Ø8 L=80 mm  
 ER16 collet Ø8...7 mm  
 Hexagonal nut ER16  
 2 supporting rods for depth stops L=1000 mm  
 4 Excludable stops  
 Standard template (installed)  
 Adjustable leveling feets (installed)  
 Air gun for cleaning (installed)

## Options

Probe stylus with pneumatic control  
 Rolling conveyor for supporting profiles L=600 mm  
 Rolling conveyor for supporting profiles L=1200 mm  
 Copy template without shapes  
 Excludable stops  
 Copy template with shapes on drawing



## PAN 31C

Pantograph-head with manually operated translation movement head with indirect lever designed to perform the three holes simultaneously and the milling machining of Cremona to semi-automatic feeding of aluminum profiles for windows and doors. L 'drilling unit 3 to feed hydro pneumatic drills with adjustable speed executions of aluminum and PVC with steel reinforcement. The movement axes of ball screw rods and bushings ensures sensitivity and precision. The horizontal pneumatic clamps with low pressure device put the car at the highest levels of security for the operator. Fermi longitudinal and transverse refer to metric rods out mask processing, probe tip in the tool axis with 3 diameters, depth stop adjustable digital indicator centers height makes it fast and precise placements. The ability to run through machining operations without turning the workpiece and the pneumatic micro-fog tool lubrication (emulsified oil) speed up the work cycle.

## Technical datas

Power supplies treephase	380/400-50/60	Volt-Hz
Power motor treephase	0.75	kW
Spindle speed	12000	r.p.m.
X-Y-Z axis stroke	310 -120 -175	mm
Clamping capacity (b x h)	175x230	mm
Maximum cutter diameter	10	mm
Diameter probe tips	5-8-10	mm
Power motor tips treephase	1.1	kW
Spindle speed tips	900	r.p.m.
Wheelbase tips	21.5	mm
Center height adjustable	15...65	mm
Weight	185	kg

## Standard equipement

Service spanners  
 Use and maintenance manual and ce marking  
 HSS milling cutter Ø5 L= 68 mm  
 HSS milling cutter Ø10 L= 95 mm  
 ER16 collet Ø10...9 mm  
 Hexagonal nut ER16  
 2 Supporting rods for depth stops L=1000 mm  
 4 Excludable stops  
 Agjustable leveling feets (installed)  
 Standard template (installed)  
 Air gun for cleaning (installed)  
 3 Tips Cremonese holes (excluded)

## Options

Probe stylus with pneumatic control  
 Rolling conveyor for supporting profiles L= 600 mm  
 Rolling conveyor for supporting profiles L=12000 mm  
 Copy template without shapes  
 Excludable stop  
 Copy template with shapes on drawing





## PAN 36

Pantograph-head with manually operated translation movement head with indirect lever designed to perform milling, following the figures reproduced on the mask, on aluminum profiles for windows and doors. The rotation of the clamp base allows you to work both sides of the profile without unlocking the clamps; This device speeds up and makes more precise machining operations to be performed; performing through machining is working up to 4 faces. The movement axes of ball screw rods and bushings ensures sensitivity and precision. Horizontal and vertical pneumatic clamps with low pressure device put the car at the highest levels of security for the operator. The descent head with pneumatically controlled release of grip, the tire probe with 6 adjustable memories pneumatic drive and pneumatic tool lubrication mist (emulsified oil) help to increase productivity. The longitudinal and transverse stop referring to metric rods, the probe tip with 3 diameters aligned with the tool, spindle lock button for tool change and the jaws clamps PVC adjustable without the use of keys makes fast and precise placements.

## Technical datas

Power supplies treephase	380/400-50/60	Volt-Hz
Power motor treephase	0.35/0.45	kW
2 Spindle speed	6000/12000	r.p.m.
X-Y-Z axis stroke	360-120-175	mm
Clamping capacity(bxh)	200x200	mm
Tilt clamp table	0/90	°
Maximum cutter diameter	10	mm
Diameter probe tips	5-8-10	mm
Weight	190	kg

## Standard équipement

Service spanners  
 Use and maintenance manual and ce marking  
 HSS milling cutter Ø5 L= 68 mm  
 HSS milling cutter Ø10 L= 95 mm  
 ER16 collet Ø10...9 mm  
 Hexagonal nut ER 16  
 2 Supporting rods for depth stops L=1500 mm  
 4 Excludable stops  
 Mask with figures for the lock (installed)  
 Standard template (installed)  
 Jaw central processing short profiles (installed)  
 2 Rolling conveyor for supporting profiles L=500 mm  
 Adjustable leveling feets (installed)  
 Air gun for cleaning (installed)

## Options

Copy template without shapes  
 Excludable stops  
 Lubrification tool pulse (neat oil)  
 Copy template with shapes on drawing



## PAN 40 - PAN 40I

Single-head pantograph manually operated, semi-automatic head with descent device for rapid approach and skipping chambers designed to perform milling, following the figures reproduced on the mask, on aluminum profiles for windows and doors. The steel structure of the machine and thick aluminum castings offer the possibility of working steel up to 3 mm with standard equipment; with specific accessory in the "40I" stainless steel up to 2 mm. The downward movement of bars and bushings Ball and interpolated axes on guides and recirculating ball bearings provides rigidity and precision. In version "40" the engine has two fixed speed for a aluminum and high for the iron; in "40I" version the speed is adjustable by means of an electronic variator with visible indication on the display to improve the quality of the work and the tool life. Horizontal and vertical pneumatic clamps with low pressure device and the commands of ergonomic grips put the car at the highest levels of security for the operator. The work plan of ground steel with nickel coating is smooth non-stick to the chips, scratch for the profile and rust over time. The longitudinal and transverse stop referring to metric rods out mask processing, probe tip aligned with tool diameters and 3 stops of pneumatic and mechanical depth make fast and precise placements. The ability to run through machining operations without turning the workpiece, the probe pneumatic control on the handle and the pneumatic micro-fog tool lubrication (emulsified oil) speed up the work cycle.

# PAN 40 - PAN 40I

Rinaldi



## Technical datas

Power supplies treephase	380/400-50/60	Volt-Hz
Power motor treephase (model 40)	0.35/0.55	kW
2 Spindle speed (model 40)	3500/12000	r.p.m.
Power motor treephase (model 40I)	1.1	kW
Spindle speed adjustable (model 40I)	1000...12000	r.p.m.
X-Y-Z axis stroke	400-150-200	mm
Clamping capacity (b x h)	200x240	mm
Maximum cutter diameter	12	mm
Diameter probe tips	5-8-10	mm
Weight	350	kg

## Standard equipement

Service spanners  
Use and maintenance manual and ce marking  
HSS milling cutter Ø5 L= 68 mm  
HSS milling cutter Ø10 L= 95 mm  
ER20 collet Ø6...5, Ø8...7 e Ø10...9 mm  
Hexagonal nut ER20  
2 Supporting rods for depth stops L=1000 mm  
4 Excludable stops  
2 Rolling conveyor for supporting profiles L=800 mm  
Mask with figures for the lock (installed)  
Adjustable leveling feets (installed)  
Air gun for cleaning (installed)

## Options

Copy template without shapes  
Lubrification tool pulse(neat oil)  
Tool cooling -10 ° for machining stainless steel (model 40I)  
Excludable stops  
Copy template with shapes on drawing



**Montfort International Ltée**

2500 avenue Watt, Québec (QUÉBEC) Canada G1P 3T3  
Tel : 418-877-0778 | 1-800-463-6668 - Fax: 418-877-0548  
info@montfort-international.com | www.montfort-international.com





## PAN 38I

Pantograph-head with manually operated pneumatic clamping down head and translational movement through indirect lever. Possibility of working steel up to 3 mm with standard equipment; with specific stainless steel accessory to 2 mm. adjustable spindle speed (and visible via display) with electronic inverter for improved quality of milling and longer tool life. Descending movement of ball screw rods and bushings. Translational motion of guides and recirculating ball bearings. The probe with pneumatic drive and with 6 adjustable memories allows fast and accurate machine. The rotation of the clamp base system (patented) allows you to work 4 delprofilato faces without releasing the clamps. The rotary movement from 0 ° to 180 ° maintains the same axis; FIG produced on the first face at 0 ° appears to be at the same height of the one reproduced on the opposite face at 180 °. This system allows to increase the speed of execution and the accuracy, use of shorter tools, eliminating through machining operations thus reduce vibration and noise. on command protective tire work area. Horizontal and vertical pneumatic clamps with low pressure device. Unlocking descent head with pneumatic control. Spindle locking push button for tool change. Fermo mechanical depth and longitudinal and transverse stop referring to metrics auctions. pneumatic tool lubrication mist (emulsified oil).



## Technical datas

Power supplies treephase	380/400 - 50/60	Volt-Hz
Power motor treephase	1.1	kW
Spindle speed adjustable	1000...12000	r.p.m.
X-Y-Z axis stroke	360 -150 -140	mm
Clamping capacity (bxh)	150 x 100	mm
Maximum cutter diameter	12	mm
Diameter probe tips	5 - 8 -10	mm
Weight	400	kg

## Standard equipment

Service spanners  
 Use and maintenance manual and ce marking  
 HSS milling cutter Ø5 L= 68 mm  
 HSS milling cutter Ø10 L= 95 mm  
 ER20 collet Ø6...5, Ø8...7 e Ø10...9 mm  
 Hexagonal nut ER 20  
 4 Excludable stops  
 2 Rolling conveyor for supporting profiles L=500 mm  
 Central jaw for working short profiles (installed)  
 2 Supporting rods for depth stops L=1500 mm  
 Mask with figures standard  
 Mask with figures for the lock (installed)  
 Adjustable leveling feets (installed)  
 Air gun for cleaning (installed)

## Options

Copy template without shapes  
 Lubrification tool pulse (neat oil)  
 Tool cooling -10° for machining stainless steel  
 Excludable stops  
 Copy template with shapes on drawing



## PAN 38L - PAN38LI

Pantograph Manual single command, about 3000 mm long base, mobile unit with manual and pneumatic locking, available in version "38L" with 2 speed motor and pneumatic tool lubrication mist (emulsified oil); in "38LI" version with motor with inverter, digital display tool speed display LED, pneumatic tool lubrication pulse (neat oil) and quick change tool manually with pneumatic control. semi-automatic feed head goes down, oil pneumatic, with device for rapid approach and skipping chambers. Possibility of working steel up to 2 mm with standard equipment; with specific stainless steel accessory up to 1.5 mm. Moving down the head and wagon of ball screw bars, bushing and translational movement of the head rails and recirculating ball bearings ensure rigidity and precision. Pneumatic stylus with pneumatic traverse up to 6 adjustable memories it allows fast and accurate machine. The rotation of the clamp base allows you to work 3 sides of the profile without unlocking the clamps or performing through machining 4 sides. The rotary movement from 0 ° to 180 ° maintains the same axis; FIG produced on the first face at 0 ° is at the same height of the one reproduced on the opposite face at 180 °. This system allows to increase the speed of execution and the accuracy, use of lower tool length thus reduce vibration and noise. on command protective tire work area. No. 4 pneumatic horizontal and vertical clamps with low pressure device, the latch tire depth, the longitudinal and transverse stop referring to auctions metrics and movement down the head controlled by buttons on garanticono handles high productivity.

# PAN 38L - PAN38LI

Rinaldi



## Technical datas

Power supplies treephase	380/400 - 50/60	Volt-Hz
Power motor treephase (model 38L)	0.35/0.55	kW
2 Spindle speed (model 38L)	3500/1200	r.p.m.
Power motor treephase(model 38LI)	1.1	kW
Spindle speed adjustable (model 38LI)	1000...12000	r.p.m.
X-Y-Z axis stroke	2500-150-250	mm
Clamping capacity (bxh)	140 x 110	mm
Tilt the clamp	0/90/180	°
Maximum cutter diameter	12	mm
Diameter probe tips	5 - 8 -10	mm
Weight	680	kg

## Standard equipement

Service spanners  
Use and maintenance manual and ce marking  
HSS milling cutter Ø5 L= 68 mm  
HSS milling cutter Ø10 L= 95 mm  
ER20 collet Ø6...5, Ø8...7 mm e Ø10...9 mm  
Hexagonal nut ER 20 (model 38L)  
ER20 collet tool holder + hexagonal nut (clamp excluded) (model 38LI)  
6 Fermi tank (installed)  
Mask with figures for the lock  
Mask with figures for the lock (installed)  
Figures mask with zipper  
Mask with figures for cremonese hole spacing 21..5 mm  
2 Excludable stops  
Agjustable leveling feets (installed)  
Air gun for cleaning (installed)

## Options

Copy template without shapes  
Lubrification tool pulsu (neat oil)  
Tool cooling -10° for machining stailless steel (model 38LI)  
Excludable stops  
Toolholder + ER20 nut Hex. (clamp excluded)(model 38LI)  
Tool holder WELDON Ø6 mm, Ø8 mm Ø10 mm (model 38LI)  
Fermo wagon  
Fermo 5 position transverse  
Copy template with shapes on drawing



**Montfort International Ltée**

2500 avenue Watt, Québec (QUÉBEC) Canada G1P 3T3  
Tel : 418-877-0778 | 1-800-463-6668 - Fax: 418-877-0548  
info@montfort-international.com | www.montfort-international.com



## FOR 16

Drilling machine with manual feed mono head with 2 spindles with variable center distance. Mobile tip displacement with hand wheel. The adjustable clamp plane along the Y axis, with possibility of memorizing 6 positions, speeds up the placement. The forward movement of the ball spindle rods and bushings ensures precision and sensitivity in the downhill. horizontal pneumatic clamp with low pressure device and the mechanical depth stop facilitate the work cycle. pneumatic tool lubrication mist (emulsified oil) with two nozzles.

# FOR 16

Rinaldi



## Technical datas

Power supplies treephase	380/400 - 50/60	Volt-Hz
Power motor trephase	0.75	kW
Spindle speed	2500	r.p.m.
Z axis stroke	100	mm
Clamping capacity (bxh)	120 x 160	mm
Shank diameter tip with plan	12	mm
Wheelbase adjustable spindles	28...160	mm
Weight	100	kg

## Standard equipement

Service spanners  
Use and maintenance manual and ce marking  
2 Punta HSS 2ø6/ 11.5 to 90 ° + 0 tang ø12x30 plan  
4 Excludable stops  
Support rod jokes L=1000 mm  
Adjustable leveling feets (installed)  
Air gun for cleaning (installed)

## Options

Right and left roller support profile with foot L=1200 mm  
Excludable stops  
Drills of different types



**Montfort International Ltée**

2500 avenue Watt, Québec (QUÉBEC) Canada G1P 3T3  
Tel : 418-877-0778 | 1-800-463-6668 - Fax: 418-877-0548  
info@montfort-international.com | www.montfort-international.com





## FOR 18P

Drilling mono head down to feed semi-automatic head with 2 spindles with variable center distance and regulation of hydro-pneumatic feed rate. the flagship mobile pneumatic movement with the possibility of storing 2 center distances. quick approach device with automatic profile height detection. The adjustable clamp plane along the Y axis with memory for 6 positions, speeds up the placement. The movement of advance of the bars and recirculating ball bushings guarantees rigidity and precision in time. horizontal pneumatic clamp with low pressure device and the mechanical depth stop facilitate the work cycle. pneumatic tool lubrication mist (emulsified oil) with two nozzles.

# FOR 18P

Rinaldi



## Technical datas

Power supplies treephase	380/400 - 50/60	Volt-Hz
Power motor treephase	1.1	kW
Spindle speed	2250	r.p.m.
Z axis stroke	150	mm
Clamping capacity (bxh)	120 x 230	mm
Shank diameter tip with plan	12	mm
Wheelbase adjustable spindles	25...180	mm
Weight	130	kg

## Standard equipement

Service spanners  
Use and maintenance manual and ce marking  
2 Punta HSS Ø6/11.5 a 90°+0 L=120 tang Ø12x30 plan  
4 Excludable stops  
Support rod jokes L=1000 mm  
Adjustable leveling feets (included)  
Air gun for cleaning (installed)

## Options

Right and left roller support profile with foot L=1200 mm  
Excludable stops  
Drills of different types



**Montfort International Ltée**

2500 avenue Watt, Québec (QUÉBEC) Canada G1P 3T3  
Tel : 418-877-0778 | 1-800-463-6668 - Fax: 418-877-0548  
info@montfort-international.com | www.montfort-international.com



## FOR 22D - FOR 23D - FOR33D

Multihead drilling designed to make the holes for the fixing end, socket in the doors or transoms in the shutters of aluminum profiles for windows and doors. The left head is fixed, the other movable manually with pneumatic locking; metric rod equipped with a magnifying glass displays the distances between the heads. Each Automatic drop head is selectable separately, has 2 spindles with variable center distance, pneumatic displacement of the moving point and memorize 2 wheelbases; the movement of the ball spindle rods and bushings guarantees rigidity, smoothness and precision. The quick approach device with automatic profile height detection, the adjustable clamp base transversely Y axis, with possibility to memorize 6 positions, speed placement. The tool cooling system equipped with a nozzle for each tip, the pneumatic clamp with low pressure device, the adjustment of the hydropneumatic drop-down head joined to the adjustable depth stop ensure high productivity; high height between table and spindle tip port allows you to charge the front bar by not insert the side with clear advantages on the loading time and preventing the part from scratching. The sliding mobile control panel improves the ergonomics of use. The version "22D" and "23D" have 2 heads and crankcase length respectively 2000 and 3000 mm, the "33D" has 3 heads and crankcase length of 3000 mm.

# FOR 22D - FOR23D - FOR33D

Rinaldi



## Technical datas

Power supplies treephase	380/400 - 50/60	Volt-Hz
Power motor treephase	1.1	kW
Spindle speed	2250	r.p.m.
Z axis stroke	150	mm
Clamping capacity (bxh)	120 x 230	mm
Shank diameter tip	12	mm
Wheelbase adjustable spindles	25...180	mm
Length base	2000-3000	mm
Weight (model 22D-23D-33D)	400-520-600	kg

## Standard equipement

Service spanners  
Use and maintenance manual and ce marking  
2 Excludable stops  
4/6 Punta HSS Ø 6/11.5 a 90°+0 L=120 tang Ø12x30 plan  
2 Supporting rods for depth stops L=1000 mm  
Adjustable leveling feets (included)  
Air gun for cleaning (installed)

## Options

Excludable stops  
Drills of different types



**Montfort International Ltée**

2500 avenue Watt, Québec (QUÉBEC) Canada G1P 3T3  
Tel : 418-877-0778 | 1-800-463-6668 - Fax: 418-877-0548  
info@montfort-international.com | www.montfort-international.com





## MUL 46R

Single-head drilling machine with manual feed with 6 spindles designed to carry out drilling needed for the installation of heavy duty hinges in one working cycle (blocking sash and frame together) ensuring rapid and precise execution. The quick change system speeds up the placement of the tips for drilling of hinges on two wings to be carried out right and left. Ability to vary the spacing of the holes between the leaf and teleaio and store 6 repeatable positions. Horizontal pneumatic clamp with low pressure device. Clamp base with stationary turret to 6 adjustable frame centering positions. Fermo mechanical depth. pneumatic tool lubrication mist (emulsified oil) with three nozzles.



## Technical datas

Power supplies treephase	380/400 - 50/60	Volt-Hz
Power motor treephase	1.1	kW
Spindle speed	2400	r.p.m.
Z axis stroke	100	mm
Clamping capacity (bxh)	195 x 140	mm
Shank diameter tip with plan	10	mm
Wheelbase adjustable hinge	48...110	mm
Weight	120	kg

## Standard equipement

Service spanners  
Use and maintenance manual and ce marking  
Spacer front wheelbase drilling choose (installed)  
Spacer rear wheelbase drilling will choose(installed)  
4 Excludable stops  
Supporting rods for depth stops L=1000 mm  
Adjustable leveling feets(installed)  
Air gun for cleaning (installed)  
6 Tips (excluded)

## Options

Roller right and left support profile with foot L=1200 mm  
Joke excludable  
Special drilling spacing distances  
Different types of tips



## TMA 42 - TMA 42A

Single head sawing machine with manual or semi-automatic feed knife in "SA" version, with large cutting capacity thanks to the adjustable vertical. Tilt head with three fixed positions  $-45^{\circ}$   $90^{\circ}$   $+45^{\circ}$ . worktop ground steel, upward movement of the head and vertical support rails and recirculating ball grantisce rigidity and precision. The vertical pneumatic clamps with low pressure device and integral work area protection impose the machine at the highest safety levels. feed speed hydropneumatic adjustment (version SA). Removable swarf collecting drawer and preparation for attack aspotazione fumes make the car clean and tidy. Pneumatic blade mist lubrication (emulsified oil).

# TMA 42 - TMA 42A

Rinaldi



## Technical datas

Power supplies treephase	380/400 - 50/60	Volt-Hz
Power motor treephase	3100	kW
Speed rotating blade	1.5	r.p.m.
Diameter blade	420	mm
Vertical fence adjustable	0...-100	mm
Tilt adjustable blade	-15...+15	°
Weight (model 42-42A)	230	kg

## Standard équipement

Service spanners  
Use and maintenance manual and ce marking  
Blade with carbide teeth HM Ø420 mm (installed)  
2 Tunnel accident prevention side L = 800 mm  
Attack suction mouth Ø70 mm  
Adjustable leveling feets (installed)  
Air gun for cleaning (installed)

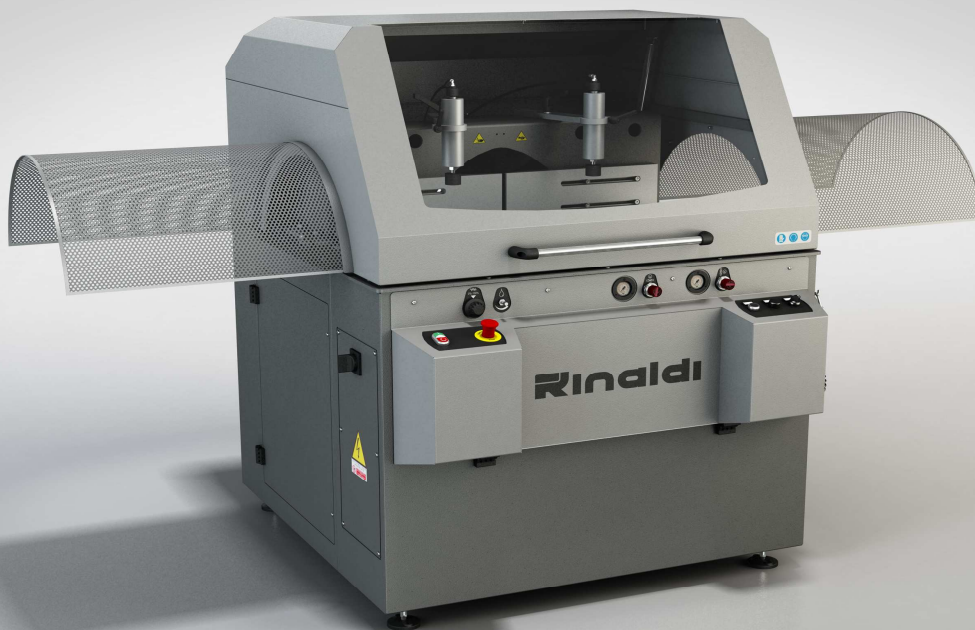
## Options

Horizontal vice pneumatic  
Loading roller: RIS 22-44-66  
Unloading roller: RIS 20M-40M-17V-40V-60V-40E-60E  
Industrial vacuum wheeled model ASP 15



**Montfort International Ltée**

2500 avenue Watt, Québec (QUÉBEC) Canada G1P 3T3  
Tel : 418-877-0778 | 1-800-463-6668 - Fax: 418-877-0548  
info@montfort-international.com | www.montfort-international.com



## TMA 60A

Single head sawing machine with large cutting capacity to feed semi-automatic blade. adjustable vertical fence in two positions to increase the cutting capacity; cutting angle up to 15 ° right and left with three fixed positions -45 °, 0 °, + 45 ° for quick placement. Integral cutting area protection with lateral tunnel accident prevention. Work ground steel, upward movement up head on guides and recirculating grantisce rigidity and precision ball over time. The vertical pneumatic clamps with low pressure device and integral work area protection impose the machine at the highest safety levels. feed speed hydropneumatic adjustment. Removable swarf collecting drawer and preparation for attack aspotazione fumes make the car clean and tidy. Pneumatic blade mist lubrication (emulsified oil).

# TMA 60A

Rinaldi



## Technical datas

Power supplies treephase	380/400 - 50/60	Volt-Hz
Power motor treephase	5.5	kW
Speed rotating blade	2850	r.p.m.
Diameter blade	600	mm
2 Positions vertical fence	0/180	mm
Tilt adjustable blade	-15...+15	°
Weight	500	kg

## Standard équipement

Service spanners  
Use and maintenance manual and ce marking  
Blade with carbide teeth HM Ø600 mm (installed)  
2 Side antinfortunistici tunnel L = 500 mm  
Adjustable leveling feets (installed)  
Air gun for cleaning (installed)

## Options

Tool lubrication pulse (neat oil)  
Shavings drawer pull  
Loading roller: RIS 22-44-66  
Unloading roller: RIS 20M-40M-17V-40V-60V-40E-60E  
Industrial vacuum wheeled model ASP 15  
Electronic blade tilt display  
Carter apertuta / closing pneumatic



**Montfort International Ltée**

2500 avenue Watt, Québec (QUÉBEC) Canada G1P 3T3  
Tel : 418-877-0778 | 1-800-463-6668 - Fax: 418-877-0548  
info@montfort-international.com | www.montfort-international.com





## TMF 55 A

Cropper mono front head to feed semi-automatic blade, to large cutting capacity. Tilt with electronic control head with three quick buttons  $-45^{\circ}$   $90^{\circ}$   $+45^{\circ}$ ; the interior and exterior angles up to  $20^{\circ}$  with electronic positioning. Full guarding of work zone with pneumatic control. worktop ground steel. Feed motion of guides and recirculating ball bearings. Movement of blade rotation with pair of tapered bearings. Horizontal pneumatic clamps with low pressure device. feed speed hydropneumatic adjustment. two-hand device of contemporaneity for blade advancement. digital display head tilt display LED. removable drawer chips. Provision for fume extraction nozzle. Pneumatic blade mist lubrication (emulsified oil).

## Technical datas

Power supplies treephase	380/400 - 50/60	Volt-Hz
Power motor treephase	2.2	kW
Speed rotating	2850	r.p.m.
Diameter blade	550	mm
Tilt adjustable blade	-20...+20	°
Weight (model 55-55E)	500	kg

## Standard équipement

Service spanners  
Use and maintenance manual and ce marking  
Blade with carbide teeth HM Ø550 mm (installed)  
Adjustable leveling feet (installed)  
Air gun for cleaning (installed)

## Options

Vertical pneumatic vise  
Tool lubrication pneumatic pulse (neat oil)  
Loading roller: RIS 22-44-66  
Unloading roller: RIS 20M-40M-17V-40V-60V-40E-60E  
Industrial vacuum wheeled model ASP 15



## TDF 55P

Twin-head sawing with semi-automatic movement of the mobile head comandato by numerical control, tilting external pneumatic heads with two fixed positions 90 ° and 45 °; all gradations up to 22.5 ° with mechanical feedback. oleo-pneumatic blade feed with 15 ° inclination to keep more balance the mandatory profile and increase the cutting capacity. Front fairing with chip tray, integral protection shear zone, ascending, pneumatically controlled. Profile support roller conveyor connected to the movable head that is compacted inside the fairing. Available in two cutting lengths useful: T.U. 4 m or T.U. 5 m. All linear motion slide on rails and recirculating ball bearings; the movable head transmission constituted by a brushless motor with encoder rack and pinion with inclined teeth ensures rigidity, accuracy, less noise and durability. Pneumatic blade mist lubrication (emulsified oil). 2 horizontal and 2 vertical pneumatic clamps with low pressure device together at the start of the cutting cycle with two-hand device guarantees maximum operator safety. industrial control with ARM microprocessor, Wide VGA display (800x480) color 7 "touch screen. Software GUI easier touch screen. Control panel sliding rail and recirculating balls with USB 2.0 Optional Ethernet RJ45 socket. Execution single cuts, undersized, oversized, sprouted, step-by-step and incremental. counterblocks management, cutting lists can be loaded from a USB key or Ethernet RJ45 (optional). Printer preparation of labels, chips and dust collector connection autostart vacuum ASP version 22.

## Technical datas

Power supplies treephase	380/400-50/60	Volt-Hz
Power motor blade treephase	2.2	kW
Speed rotating blade	2850	r.p.m.
Diameter blade	550	mm
Speed placement head	25	m/min.
Cutting helpful (according model)	4000-5000	mm
Minimum denomination 45°-90° / 22.5°	200/300	mm
Tilt adjustable head outside	90...22.5	°
Weight (according model)	1750-1900	kg

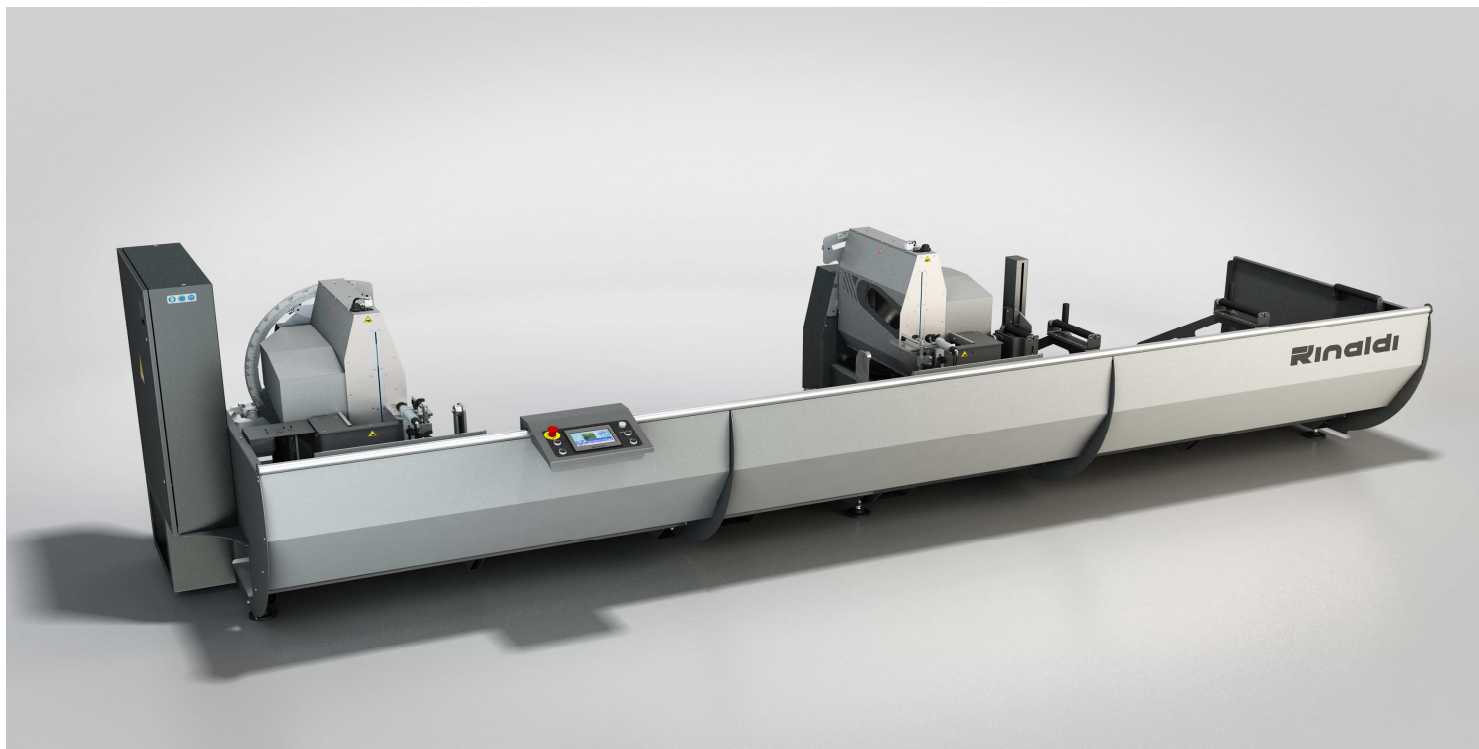
## Standard équipement

Service spanners  
Use and maintenance manual and ce marking  
2 Blade with carbide teeth HM Ø550 mm (installed)  
Adjustable leveling feet (installed)  
Air gun for cleanig (installed)

## Options

Electronic gauge height profiles  
Central roller retractable controlled pneumatico  
Thermal label printer with the program and support  
Tool lubrication pneumatic implusi (neat oil)  
Horizontal vice dispositvo with low pressure  
Horizontal vice support cut profile of roller  
Industrial vacuum wheeled ASP version 22  
Barcode reader with USB wire





## TDF 55R

Twin-head sawing with semi-automatic movement of the mobile head commanded by numerical control, external and internal pneumatic tilt head with two fixed positions 90 ° and 45 °; all gradations from 135 ° to 22.5 ° with mechanical feedback. oleo-pneumatic blade feed with 15 ° inclination to keep more balance the mandatory profile and increase the cutting capacity. Front fairing with chip tray, integral protection shear zone, ascending, pneumatically controlled. Profile support roller conveyor connected to the movable head that is compacted inside the fairing. Available in two cutting lengths useful: T.U. 4 m or T.U. 5 m. All linear motion slide on rails and recirculating ball bearings; the movable head transmission constituted by a brushless motor with encoder rack and pinion with inclined teeth ensures rigidity, accuracy, less noise and durability. Pneumatic blade mist lubrication (emulsified oil). 2 horizontal and 2 vertical Morse including that of cut profile support on the support roller conveyor are pneumatic device combined with low pressure at the start of the cutting cycle with two-hand device guarantees maximum safety to the operator. industrial control with ARM microprocessor, Wide VGA display (800x480) color 7 "touch screen. Control panel sliding rail and recirculating balls with USB 2.0 Optional Ethernet RJ45 socket. Software GUI easier touch screen. Execution single cuts, undersized, oversized, sprouted, step-by-step and incremental. counterblocks management, cutting lists can be loaded from a USB key or Ethernet RJ45 (optional). Printer preparation of labels, chips and dust collector connection autostart vacuum ASP version 22.



## Technical datas

Power supplies treephase	380/400-50/60	Volt-Hz
Power motor blade treephase	2.2	kW
Speed rotating blade	2850	r.p.m.
Diameter blade	550	mm
Speed placement head	25	m/min
Cutting helpful (according model)	4000-5000	mm
Minimum denomination 135°-90° -45°	650-360-400	mm
Tilt adjustable head outside	90...22.5	°
Tilt adjustable internal head	90...135	°
Weight (according model)	1750-1900	kg

## Standard équipement

Service spanners  
Use and maintenance manual and ce marking  
2 Blade with carbide teeth HM Ø550 mm (installed)  
Adjustable leveling feet (installed)  
Air gun for cleaning (installed)

## Options

Electronic gauge measuring height profile  
Central roller retractable controlled pneumatico  
Thermal label printer with the program and support  
Tool lubrication pneumatic implusi (neat oil)  
Horizontal vice dispositvo with low pressure  
Industrial vacuum wheeled ASP version 22



## TDF 55E

Twin-head sawing with semi-automatic movement of the mobile head, external and internal head inclination  $22.5^{\circ}$  to  $135^{\circ}$ , and all the natural gradations electronically controlled controlled by numerical control. The advancement hydropneumatic blade with inclination of  $15^{\circ}$  allows a gentler cutting increasing the cutting capacity. Tilt heads up to  $22.5^{\circ}$  external and internal up to  $135^{\circ}$  including all intermediate gradations electronically controlled; the measuring system with magnetic tape gerantisce maximum precision. Front fairing with chip tray; integral protection of cutting area, ascending, pneumatically actuated. Loading roller attached to the movable head that is compacted inside the fairing. Available in two cutting lengths useful: T.U. 4 m or T.U. 5 m. All linear motion slide on rails and recirculating ball bearings; the movable head transmission constituted by a brushless motor with encoder rack and pinion with inclined teeth ensures rigidity, accuracy, less noise and durability. Pulse pneumatic blade lubrication (neat oil). 2 horizontal and 2 vertical Morse including that of cut profile support on the support roller conveyor are pneumatic device combined with low pressure at the start of the cutting cycle with two-hand device guarantees maximum safety to the operator. CNC-Industrial PC with Intel microprocessor, Windows XP Embedded operating system RT, VGA display (800x600) with 10.4" color touch screen. Panel Sliding Mobile COMADI on guides and recirculating ball with USB 2.0 shoes optional RJ45 ethernet jack. Software GUI easier on fully programmable with Windows based touch screen. Execution single cuts, undersized, oversized, sprouted, step-by-step and incremental. counterblocks management, cutting lists can be loaded from a USB key or Ethernet RJ45 (optional). Printer preparation of labels, chips and dust collector connection autostart vacuum ASP version 22.

## Technical datas

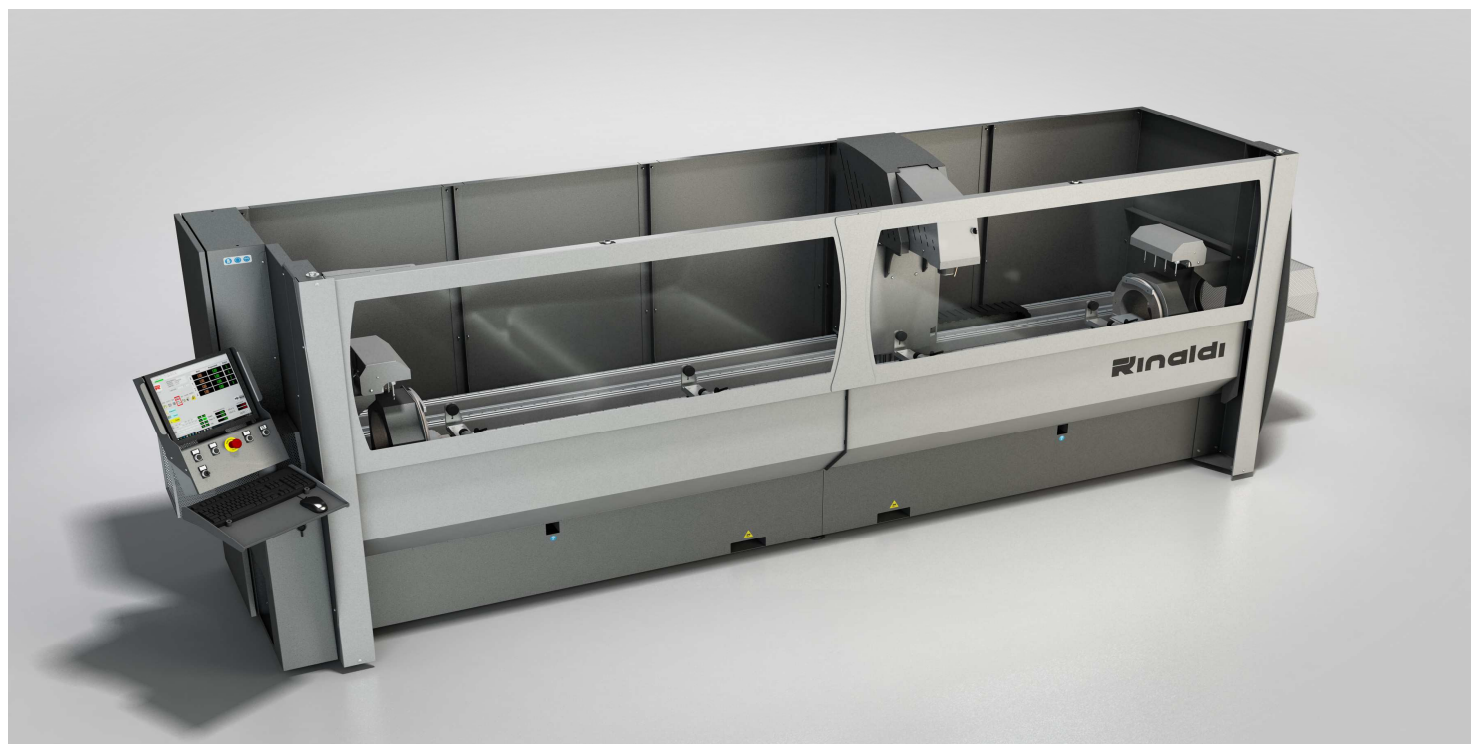
Power supplies treephase	380/400-50/60	Volt-Hz
Power motor treephase	2.2	kW
Speed rotating blade	2850	r.p.m.
Diameter blade	550	mm
Speed placement head	25	m/min.
Cutting helpful (according model)	4000-5000	mm
Minimum denomination 135°-90° / 22.5°	200/300	mm
Tilt adjustable head outside	90...22.5	°
Tilt adjustable internal head	90...135	°
Weight (according model)	1750-1900	kg

## Standard equipment

Service spanners  
Use and maintenance manual and ce marking  
2 Blade with carbide teeth HM Ø550 mm (installed)  
Adjustable leveling feet (installed)  
Air gun for cleaning (installed)

## Options

Electronic gauge measuring height profile  
Central roller retractable controlled pneumatico  
Thermal label printer with the program and support  
Horizontal vice dispositvo with low pressure  
Industrial vacuum wheeled ASP version 22  
Barcode reader with USB wire



## CDL 33Q

Working center with moving column with vertical spindle and 4 axis controlled by CNC including the rotation of the plane  
morse continuously which allows any angle ranging from  $-90^{\circ}$  to  $+90^{\circ}$ . Integral side profiles with chip tray; protection  
sliding front side pneumatically actuated. Fast automatic tool 4 ISO30 taper positions. workpiece clamping with 4 pneumatic  
vices with manual positioning and automatic position control; pneumatic locking option. Possibility to work aluminum, PVC,  
steel up to 4 mm and stainless steel up to 3 mm with a specific accessory.



## Technical datas

Power supplies treephase	380/400 - 50/60	Volt-Hz
Spindle drive phase	2.2	kW
Spindle speed adjustable	1000...12000	giri/min.
Axis stroke X-Y-Z	3300-250-200	mm
Speed positioning axis X-Y-Z	65-25-25	m/min.
Tilt axis adjustable clamp base	-90°...+90°	°
Time rotation axis from 0 ... 90 °	2	sec
Tolerance positioning axes	+/- 0.1	mm
Capacity vice (bxh)	160 x 120	mm
Diameter cutter	10	mm
Maximum diameter blade	140	mm
Weight	1450-1550	kg

## Standard equipment

Service spanners  
 Use and maintenance manual and ce marking  
 4 Jaws grip PVC H=25 mm, 4 jaws grip PVC H=75 mm  
 HM single-edged cutter Ø6 L=60, Ø8 L=80, Ø10 L=100 mm  
 ER16 collet Ø6...5, Ø8...7 e Ø10...9 mm  
 2 Tool holder taper ISO30 ER16 mini L=50 + nut (clamp excluded)  
 Adjustable leveling feets (included)

## Options

S1 5.5 kW electric spindle power from 2000 to 20,000 rev / min.  
 Positioning and automatic locking clamps 4  
 4 pneumatic locking clamps  
 1 vice manual locking 1 pneumatic clamping vise  
 1 vice locking and automatic placement  
 Joke pneumatic right side  
 Tool magazine 4 places right side barcode reader with wire and software tunnel couple top cover integral with windows and 2 mouths D.100 fume extraction  
 Software License CAD / CAM three-dimensional HICAM 3 with USB key  
 Extra USB key for office PC (not used simultaneously) additional license CAD / CAM three-dimensional HICAM 3 with USB key  
 Annual maintenance fee for one software license HICAM 3



## LIMA 25

Shaper disc with cutting on 2 faces, designed to run spigots on aluminum profiles for windows and doors. The graduated response, the scratch-resistant work surface and motor protection with thermal magnetic circuit breaker put the car at the highest levels of quality and safety for the operator.

## Technical datas

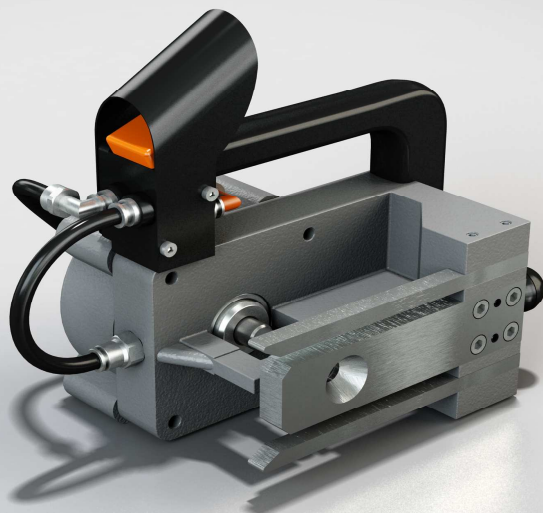
Power supplies treephase	380/400 - 50/60	Volt-Hz
Power motor treephase	0.55	kW
Speed rotating	680	r.p.m.
Clamp rotation (degrees)	90...45	°
Rotatory disc file diameter	250	mm
Weight	90	kg

## Standard équipement

Service spanners  
Use and maintenance manual and ce marking  
Disk file Ø250mm  
Adjustable leveling feets (installed)

## Options

Disk files Ø250x20



## PNEUFOR

Portable pneumatic punching machine for the execution of the hole necessary for the assembly of the brackets of the corner junction. Drive control with push-button valve. steel matrix with high resistance to hardening treatment and punch with inclined cut. The punching is produced for a specific bracket.



## Technical datas

Compressed air supply	8	bar
Working pressure	6	bar
Thrust force	420	kg
Maximum stroke	15	mm
Weight	4.5	kg

## Standard équipement

Manual and maintenance with an EC declaration  
Pneumatic valve with security protection

## Options

Spray 0.4 liters neat oil  
Matrix for different set / a drawing  
Punch for different series / a drawing



## PNEUFOR 12

Pneumatic punching machine designed specifically for typical machining of profiles for windows and doors without removing chips such as doors, sliding, shutters, facades and balconies. The machine can be of the horizontal or vertical type with the possibility of having of rapidly excludable machining.

# PNEUFOR 12

Rinaldi



## Technical datas

Compressed air supply	8	bar
Working pressure	7	bar
Thrust force	1200	kg
Maximum stroke	30	mm
Weight	30	kg

## Standard équipement

Manual and maintenance with an EC declaration  
Pneumatic pedal with safety protection

## Options

Base plate with treatment group and blowing air gun for cleaning  
Spray 0.4 liters neat oil  
Station for different set / a drawing



**Montfort International Ltée**

2500 avenue Watt, Québec (QUÉBEC) Canada G1P 3T3  
Tel : 418-877-0778 | 1-800-463-6668 - Fax: 418-877-0548  
info@montfort-international.com | www.montfort-international.com



## RIS 22 - RIS 44 - RIS 66

Roller conveyor load profile support right or left side with a modular structure, electro-welded painted sheet. 4-8-12 equipped with PVC roller bearings (version 22-44-66) offer maximum smoothness and are scratch-resistant for the profile. The "22" version has a length of 2200 mm, the version "44" of 4400 mm and the version "66" of 6600 mm.



# RIS 22 - RIS 44 - RIS 66

Rinaldi



## Technical datas

Length (model 22-44-66)	2200-4400-6600	mm
Roll width	300	mm
Height adjustable	900...950	mm
Capacity (model 22-44-66)	25-50-75	kg
Diameter rollers	40	mm
Weight (model 22-44-66)	25-50-75	kg

## Standard équipement

1-2-3 Feet manufactured from sheet support (model 22-44-66)  
Connection bracket to the machine  
2-4-6 Pads adjustable (installed) (model 22-44-66)



**Montfort International Ltée**

2500 avenue Watt, Québec (QUÉBEC) Canada G1P 3T3  
Tel : 418-877-0778 | 1-800-463-6668 - Fax: 418-877-0548  
info@montfort-international.com | www.montfort-international.com



## RIS 20M - RIS 40M

Unloading roller right side, the stop system with manual movement, reading the portion of metric rod to match with saws mono head. Structure in electro-welded painted sheet and anodized aluminum. Equipped with 4-8 PVC roller bearings (20M-40M version) offer maximum smoothness and scratch result for the profile. The version "20" has a usable length of reference of 2000 mm and the version "40" of 4000 mm.

# RIS 20M - RIS 40M

Rinaldi



## Technical datas

Working length (model 20M-40M)	2000-4000	mm
Total Length (model 20M-40M)	2200-4400	mm
Roll width	300	mm
Height adjustable	900...950	mm
Capacity (model 20M-40M)	25-50	kg
Diameter rollers	40	mm
Weight (model 20M-40M)	30-55	kg

## Standard equipment

Service spanners  
Use and maintenance manual and ce marking  
1-2 Feet in sheet metal pressopiegata of support (model 20M-40M)  
Connection bracket to the machine  
4-6 Adjustment Pads orientable (installed) (model 20M-40M)  
Locking lever reference stop



**Montfort International Ltée**

2500 avenue Watt, Québec (QUÉBEC) Canada G1P 3T3  
Tel : 418-877-0778 | 1-800-463-6668 - Fax: 418-877-0548  
[info@montfort-international.com](mailto:info@montfort-international.com) | [www.montfort-international.com](http://www.montfort-international.com)



## RIS 17V - RIS 40V - RIS 60V

Unloading roller support rail right side with positioning motion joke reference, can be disabled, manually operated hand wheel and clamping lever integrates. Reading the share of LCD digital display with battery power. Structure in electro-welded painted sheet and anodized aluminum, battling movement of sliding reference guide and recirculating ball bearings and transmission steel strip to ensure maximum stiffness, smoothness and precision. 4-8-12 equipped with PVC roller bearings (version 17V-40V-60V) provide maximum smoothness and are scratch-resistant for the profile. The version "17V" has a reference of 1700 mm lunghezzadi, the "40V" version of 4000 mm and the "60V" version of 6000 mm.



# RIS 17V - RIS 40V - RIS 60V

Rinaldi



## Technical datas

Power supply	2x1.5 AA batteries	Volt DC
Working length (model 17V-40V-60V)	1700-4000-6000	mm
Length (model 17V-40V-60V)	2200-4400-6600	mm
Roll width	300	mm
Height adjustable	900...950	mm
Reach	25-50-75	kg
Positioning tolerance	+/-0.1	mm
Diameter rollers	40	mm
Weight (model 17V-40V-60V)	35-65-100	kg

## Standard équipement

Service spanners  
Use and maintenance manual and ce marking  
1-2-3 Feet manufactured from sheet support (model 17V-40V-60V)  
Connection bracket to the machine  
2-4-6 Adjustable leveling feet(installed) (model 17V-40V-60V)



**Montfort International Ltée**

2500 avenue Watt, Québec (QUÉBEC) Canada G1P 3T3  
Tel : 418-877-0778 | 1-800-463-6668 - Fax: 418-877-0548  
info@montfort-international.com | www.montfort-international.com



## RIS 36E

Unloading roller support rail right side with automatic positioning motion of the reference beat, excludable, driven by DC motor and position measurement system with encoder. Reading and setting the share of LCD digital display. Structure in electro-welded painted sheet and anodized aluminum, moving the reference beat with strap. Equipped with 8 PVC roller bearings provide maximum smoothness and are scratch-resistant for the profile.

## Technical datas

Power supplies singlephase	220/240-50/60Hz	Volt DC
Working length	3600	mm
Total Length	4400	mm
Roll width	300	mm
Height adjustable	900...950	mm
Capacity	50	kg
Positioning tolerance	+/-0.5	mm
Diameter rollers	40	mm
Weight	90	kg

## Standard equipment

Service spanners  
Use and maintenance manual and ce marking  
2-3 Feet manufactured from sheet support  
Connection bracket to the machine  
4-6 Adjustable leveling feets (installed)



## RIS 70E

Unloading roller support rail right side with automatic positioning motion of the reference beat, excludable, driven by DC motor and position measurement system with encoder. Reading and setting the share of LCD digital display. Structure in electro-welded painted sheet and anodized aluminum, moving the reference beat with strap. Equipped with 8 PVC roller bearings provide maximum smoothness and are scratch-resistant for the profile.



## Technical datas

Power supplies singlephase	220/240-50/60Hz	Volt DC
Working length	3600	mm
Total Length	4400	mm
Roll width	300	mm
Height adjustable	900...950	mm
Capacity	50	kg
Positioning tolerance	+/-0.5	mm
Diameter rollers	40	mm
Weight	90	kg

## Standard equipement

Service spanners  
Use and maintenance manual and ce marking  
2-3 Feet manufactured from sheet support  
Connection bracket to the machine  
4-6 Adjustable leveling feet (installed)



## ASP 15 - ASP 22 - ASP 40

Industrial vacuum cleaner on wheels with centrifugal fan muted high airflow with a removable container chips, designed for aluminum shavings. The filter unit equipped with pneumatic turbine allows the operator to easily clean the filter increasing the life. A tubular electro-welded painted sheet, the fan connected directly to the motor shaft and the motor protection circuit breaker ensure lasting quality over time and class-leading safety. Available in three "15" versions for individual machines with a Ø 100 mm suction mouth, "22" for cut-off double head with two intake vents Ø 100 mm latter includes automatic start and "40" for all uses intensively with two mouths of Ø160 intake.

# ASP 15 - ASP 22 - ASP 40

Rinaldi



## Technical datas

Power supplies treephase	380/400-50/60	Volt-Hz
Power motor treephase (model 15-22-40)	1.5-2.2-4.0	kW
Speed fan	2850	r.p.m.
Container capacity (model 15-22-40)	100-160-160	l
Capacity (model 15-22-40)	1200-1400-2200	m3/h
Depression (model 15-22-40)	30-30-60	mbar
Weight (model 15-22-40)	100-160-200	kg

## Standard equipment

Use and maintenance manual and ce marking  
Container with 4 castors (installed)  
Filter bag in polistere (istalled)  
4 Wheels of which 2 are adjustable with parking brake (fitted)  
Pipes, connections and reductions (excluded)

## Options

Kit 1-fitting reduction + 5000 mm pipe Ø100 for single-head miter saw (TMA40-42A/TMF55A)  
Kit 1 fitting-reduction-lance + 5000 mm pipe Ø70 local exhaust  
Kit 4-fittings reductions + 15000 Ø100 mm tube for miter saw single head (TMA 60A)



**Montfort International Ltée**

2500 avenue Watt, Québec (QUÉBEC) Canada G1P 3T3  
Tel : 418-877-0778 | 1-800-463-6668 - Fax: 418-877-0548  
info@montfort-international.com | www.montfort-international.com



## BAS 24

Extending assembly bench for doors and windows, large work surface consists of six sliding guides, easily adjustable for mounting frames of all sizes and equipped with anti-scratch rubber seals high adherence. The structure entirely of painted steel with adjustable feet and articulated guarantees maximum stability in any situation of use. The budget includes plans cassette door objects and supports tool holder.



## Technical datas

Size maximum	4000x2000	mm
Size minimum	2000x1000	mm
Height adjustable work surface	850...950	mm
Capacity 'maximum load	250	kg
Weight	110	kg

## Standard équipement

Service keys  
 Use and maintenance manual  
 2 shelves for storage accessories and tools  
 6 boxes for objects  
 2 supports for drills and screwdrivers  
 4 adjustable feet and hinged

## Options

Pneumatic system (2 quick couplings)



## PRO 4

Trolley rolls seals equipped with 4 removable and adjustable coils quickly. Tubular structure electro-welded and painted metal.

## Technical datas

Maximum reel diameter	600	mm
Diameter hole adjustable coil	150...230	mm
Maximum web width	210	mm
Capacity 'maximum load	50	kg
Weight	28	kg