

## Get Smart With Fluid Application

The easy-to-use SmartFlow® allows metal formers to take full control of die and stock lubrication. This full-featured, programmable fluid controller makes configuring, controlling, monitoring, and tracking fluid application easier than ever, leading to increased profits from the stamping or forming operation.

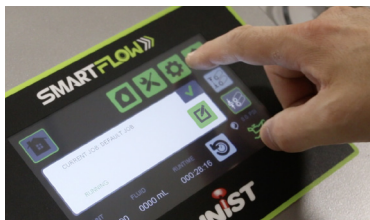
Designed around an intuitive and easy-to-use operator interface, the SmartFlow® provides simple and guided setup, advanced press control integration, fluid usage tracking, process monitoring, and enhanced diagnostic and maintenance tools.

Save and recall jobs manually or utilize the press control interface for easy, automatic changeover. Back up and transfer jobs and settings between lines with a USB flash drive and the SmartFlow's™ USB port. Pair the SmartFlow® controller with Unist's proven line of precision fluid applicators for an intelligent lubrication system that eliminates wasted fluid and mess, reduces scrap, and maximizes profits.



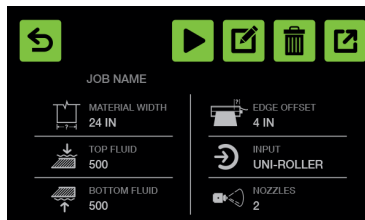
**50%**

**Reduce lubricant consumption by 50% or more when combined with a Unist Uni-Roller® S2 applicator.**



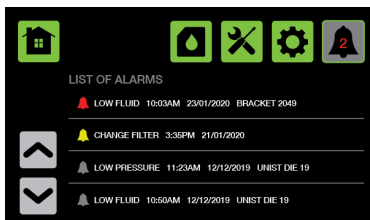
### Touch screen interface

Easily access jobs, settings, maintenance reminders, and more. The intuitive menu allows for easy transition from box to production line



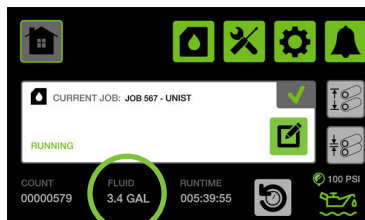
### Easily create jobs

The job setup wizard guides users through creating a job. Once created, simply increase or decrease the amount of lubricant desired for quick fine tuning of lubricant coatings



### Process monitoring

The SmartFlow® controller can monitor pressure, flow, valve performance and line status to ensure lubrication is delivered as required



### Fluid tracking

Take the guesswork out of tracking fluid consumption. Directly measure how much fluid your process is consuming with the optional flow meter. With the SmartFlow®, you'll work smarter and know your exact lubricant cost per part



**SmartFlow®**  
programmable fluid controller

**Uni-Roller® S2**  
lubricator

**MONTFORT INTERNATIONAL Ltd**  
2500 avenue Watt, Québec (QC) Canada G1P 3T3  
+ 1 (418) 877-0778 - (800) 463-6668  
info@montfort-international.com

## Specifications

### Power supply:

To integral transformer: 120 VAC, 2.5A max  
or 240 VAC, 1.3A max, 50/60 Hz  
Direct to controls: 24 VDC, up to 150 watts

### Cycle inputs:

4 inputs, 24 VDC NPN, PNP, or dry contact  
(switch closure)

### Maximum cycle input rate:

50 cycles/second at 50% duty cycle,  
minimum contact open or closed  
time: 10 ms

### Alarm inputs:

2 inputs, 24 VDC NPN, PNP, or dry  
contact

### Outputs:

Up to 22 outputs, 24 VDC, 6.5 watts,  
for nozzles or rollers

### Alarm interlock relay:

Dry contact, normally open or normally  
closed, 2A max current

### Operating temperature range:

32°F-122°F [0°C-50°C]

### Storage temperature range:

-4°F-158°F [-20°C-70°C]

### Press control interface:

Modbus protocol over RS485 serial or  
Ethernet

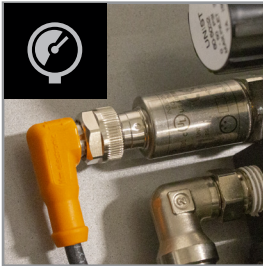
### Job storage:

250 jobs

### Job transfer:

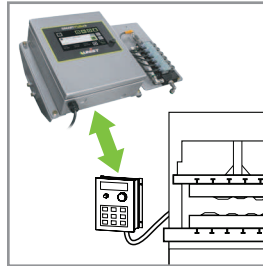
USB-A flash drive

## Options



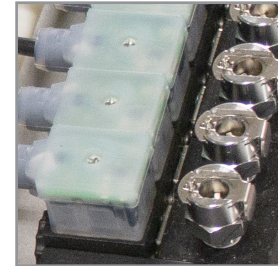
### Pressure transducer

Ensure the system is ready to dispense  
fluid by monitoring the fluid supply  
pressure. Configurable low pressure  
alarm point via the user interface



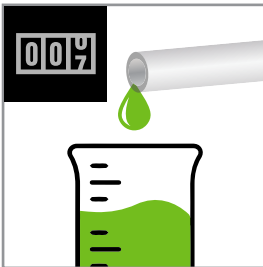
### Press control interface

Connect to production line controls  
to exchange information about jobs,  
settings, and alarms for easy job  
changeover and monitoring



### Flow monitoring

Monitor fluid pressure while  
dispensing to detect fluid flow  
for confident operation



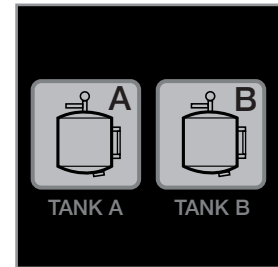
### Flow totalizer

Measure volumetric fluid flow  
to provide fluid consumption data



### Remote valve enclosure

Mount control valves up to 50 feet  
away from the main fluid controller  
for easy access to the operator panel



### Dual fluid supply

Program jobs to use fluid A or B  
when connected to dual fluid supply  
with solenoid fluid selector valve